



RB COMPONENTS, INC
11560-B SEABOARD CIRCLE . STANTON, CA 90680
PH: 714.893.1088 FX: 714.209.4017
WWW.RBCOMPONENTS.COM

OUTFITTING TRAILERS, SHOPS AND GARAGES
C A B I N E T C A T A L O G V O L U M E 1 2



RB COMPONENTS IS YOUR PREMIER ALUMINUM STORAGE SYSTEMS INNOVATOR! WE MANUFACTURE PRODUCTS WITH CUTTING-EDGE DESIGNS TO INCREASE FUNCTIONALITY AND MAXIMIZE YOUR TRAILER, SHOP AND GARAGE WORKSPACE.

THE RB CABINET LINE OFFERS A UNIQUE, PATENT-PENDING, CONTOURED HANDLE THAT ALLOWS YOU TO EASILY ACCESS ALL OF YOUR STORED ITEMS. OUR STORAGE SYSTEMS ARE CONSTRUCTED WITH DURABLE 6063 EXTRUSIONS FOR SUPERIOR STRENGTH, HIGH-DENSITY POLYETHYLENE PLASTIC END CAPS, AND 5052 POWDER-COATED ALUMINUM PANELS. WE OFFER OVERHEAD, WALL, CLOSETS, AND BASE CABINETS IN A WIDE VARIETY OF SIZES ALONG WITH CUSTOM-TAILORED TOOLBOXES TO INCREASE YOUR STORAGE CAPACITY. WITH MANY STOCK SIZES TO BUILD FROM, WE ARE CONFIDENT THAT YOU WILL BE ABLE TO CUSTOMIZE YOUR WORKSPACE WITH THE HIGHEST QUALITY CABINETS AVAILABLE.

SINCE 1998, RB COMPONENTS HAS CONTINUED TO INNOVATE TOP-OF-THE-LINE PRODUCTS, UNTOUCHED BY OUR COMPETITORS. THE FOUNDATION OF RB COMPONENTS IS OUR SUPERIOR DESIGN, CONSTRUCTION AND FUNCTIONALITY. OUR SUPERIOR DESIGNS ARE ENGINEERED BY A DEVOTED RESEARCH AND DEVELOPMENT STAFF, WHICH WILL BRING YOUR UNIQUE OUTFITTING NEEDS INTO REALITY. WE ARE AVAILABLE TO DISCUSS THE BEST PRODUCTS TO MEET YOUR NEEDS AND OFFER SOLUTIONS TO CUSTOMIZE YOUR TRAILER, SHOP OR GARAGE WORKSPACE.

TRUSTED THROUGHOUT MANY INDUSTRIES, WE MANUFACTURE PRODUCTS FOR NOT ONLY TRAILER MANUFACTURERS, BUT HOME BUILDERS, PUBLIC WORKS, RACE TEAMS, DISTRIBUTORS AND MANY OTHER INDUSTRIES AROUND THE WORLD. WITH OVER 5,000 ITEMS IN STOCK, OUR GUARANTEE IS TO ENSURE COMPLETE CUSTOMER SATISFACTION.

THANK YOU FOR CHOOSING RB COMPONENTS YOUR PREMIER ALUMINUM STORAGE SYSTEMS INNOVATOR!

QUALITY PRODUCTS

OUR TOP PRIORITY IS PROVIDING QUALITY PRODUCTS. WHEN QUALITY IS THERE, YOUR CUSTOMERS AND THEIR FRIENDS CONTINUE TO COME TO US FOR ALL THEIR NEEDS. AND OUR LIST OF SATISFIED CUSTOMERS GROWS DAILY.

LARGE INVENTORY OF STOCK ITEMS ON HAND

WITH OVER 5000 ITEMS IN STOCK WE HAVE A 98% SAME DAY SHIPPING RATE WHICH DELIVERS THE PRODUCT TO OUR CUSTOMERS FASTER THAN OUR COMPETITORS.

CUSTOMER SERVICE

OUR CUSTOMER SERVICE IS ANOTHER REASON WHY OUR CUSTOMERS HAVE CONTINUED TO COME BACK SINCE 2002. OUR CUSTOMER SERVICE REPRESENTATIVES ARE READY TO HELP WITH ORDERING PRODUCT, PRODUCT AND INTALL QUOTES, INSTALL LAYOUTS, AND MUCH MORE.

QUALITY ASSURANCE

OUR PRODUCT IS #1 IN OUR INDUSTRY FOR A REASON. OUR DETAILED QUALITY CONTROL ASSURES THAT YOU WILL RECEIVE YOUR PRODUCT FREE OF SCRATCHES, DENTS OR BLEMISHES.

SALES/CONSULTATION

OUR HIGHLY TRAINED STAFF IS HERE TO ASSIST YOU IN FINDING THE BEST PRODUCT TO FIT YOUR NEEDS WITHOUT OFFERING WHAT YOU DON'T.

DEALERS WELCOME

WITH OVER 500 DEALERS WORLDWIDE, CONTACT YOUR LOCAL DEALER TO PURCHASE YOUR DESIRED PRODUCT.

TABLE OF CONTENTS

16" OVERHEAD CABINETS	PG. 2	SAMPLE CONFIGURATIONS	PG. 10
16" AND 24" WALL CABINETS	PG. 3	HANDLE FEATURES	PG. 11
STORAGE/CLOSET CABINETS	PG. 4	DOOR FEATURES	PG. 11
BASE CABINETS	PG. 5	EXTRUSION PROFILES	PG. 12
DELUXE BASE CABINETS	PG. 5	COSMETIC FEATURES	PG. 12
BASE CABINET FEATURES	PG. 6	SHELF FEATURES	PG. 13
CORNER BASE CABINETS	PG. 7	MISC.	PG. 13-14
TOOLBOX INSERT	PG. 8		

RB COMPONENTS, INC

11560-B SEABOARD CIRCLE . STANTON, CA 90680

PH: 714.893.1088 FX: 714.209.4017

WWW.RBCOMPONENTS.COM

PART NUMBER INDEX

5200 DELUXE BASE CABINET 33X40X26	5237 WALL CABINET 33X24X14	1600 SHELF, 96X26 3D
5201 DELUXE BASE CABINET 48X40X26	5238 WALL CABINET 48X24X14	1602 SHELF, 72X26 2D
5202 DELUXE BASE CABINET 60X40X26	5239 WALL CABINET 60X24X14	1603 SHELF, 60X26 2D
5203 DELUXE BASE CABINET 72X40X26	5240 WALL CABINET 72X24X14	1604 SHELF, 48X26 2D
5204 DELUXE BASE CABINET 96X40X26	5241 WALL CABINET 96X24X14	1605 SHELF, 33X26 1D
5205 BASE CABINET 33X40X26	5242 STORAGE/CLOSET CABINET 24X75X26	1609 SHELF, 24X14 1D
5206 BASE CABINET 48X40X26	5243 STORAGE/CLOSET CABINET 48X75X26	1610 SHELF, 24X26 1D
5207 BASE CABINET 60X40X26	5250 STORAGE/CLOSET CABINET 24X75X14	1611 SHELF, 96X14 3D
5208 BASE CABINET 72X40X26	5251 STORAGE/CLOSET CABINET 48X75X14	1613 SHELF, 72X14 2D
5209 BASE CABINET 96X40X26	5266 CORNER BASE CABINET 72X40X26	1614 SHELF, 60X14 2D
5210 DELUXE BASE CABINET 33X40X14	5267 CORNER BASE CABINET W/ TOOL BOX INSERT 72X40X26	1615 SHELF, 48X14 2D
5211 DELUXE BASE CABINET 48X40X14	5268 CORNER BASE CABINET 96X40X26	1616 SHELF, 33X14 2D
5212 DELUXE BASE CABINET 60X40X14	5269 CORNER BASE CABINET W/ TOOL BOX INSERT 96X40X26	1617 SHELF, 96X26 3D (2)
5213 DELUXE BASE CABINET 72X40X14	1300 TOP PANEL 24X14, 1D	1618 SHELF, 96X14 3D (2)
5214 DELUXE BASE CABINET 96X40X14	1301 TOP PANEL 24X26, 1D	930 26IN BASIC DIVIDER, 8.5IN
5215 BASE CABINET 33X40X14	1302 TOP PANEL 33X26, 1D	931 26IN BASIC DIVIDER, 5IN
5216 BASE CABINET 48X40X14	1303 TOP PANEL 48X14, 2D	932 26IN BASIC DIVIDER, 2IN
5217 BASE CABINET 60X40X14	1304 TOP PANEL 48X26, 2D	933 14IN BASIC DIVIDER, 8.5IN
5218 BASE CABINET 72X40X14	1306 TOP PANEL 60X26, 2D	934 14IN BASIC DIVIDER, 5IN
5219 BASE CABINET 96X40X14	1308 TOP PANEL 72X26, 2D	935 14IN BASIC DIVIDER, 2IN
5225 OVERHEAD CABINET 33X16X14	1310 TOP PANEL 96X26, 3D	5258 TOOL BOX INSERT 33,96X26X4-3", 2-6",1-10"
5226 OVERHEAD CABINET 48X16X14	1311 TOP PANEL 96X14, 3D	5259 TOOL BOX INSERT 33,96X26X2-3",3-10"
5227 OVERHEAD CABINET 60X16X14	1312 TOP PANEL 72X14, 2D	5260 TOOL BOX INSERT 72X26X4-3",2-6",1-10"
5228 OVERHEAD CABINET 72X16X14	1313 TOP PANEL 60X14, 2D	5261 TOOL BOX INSERT 72X26X2-3",3-10"
5229 OVERHEAD CABINET 96X16X14	1315 TOP PANEL 33X14, 1D	5262 TOOL BOX INSERT 33,96X14X4-3", 2-6",1-10"
5230 WALL CABINET 24X16X14	5270 DELUXE BASE CABINET 33X40X20	5263 TOOL BOX INSERT 33,96X14X2-3",3-10"
5231 WALL CABINET 33X16X14	5271 DELUXE BASE CABINET 48X40X20	5264 TOOL BOX INSERT 72X14X4-3",2-6",1-10"
5232 WALL CABINET 48X16X14	5272 DELUXE BASE CABINET 60X40X20	5265 TOOL BOX INSERT 72X14X2-3",3-10"
5233 WALL CABINET 60X16X14	5273 DELUXE BASE CABINET 72X40X20	
5234 WALL CABINET 72X16X14	5274 DELUXE BASE CABINET 96X40X20	
5235 WALL CABINET 96X16X14		
5236 WALL CABINET 24X24X14		

TERMS AND CONDITIONS

PRICING INFORMATION:

WE STRIVE TO MAINTAIN CATALOG PRICING. HOWEVER, PRICES ARE SUBJECT TO CHANGE WITHOUT NOTICE. PLEASE VERIFY PRICES WITH YOUR SALESPERSON WHEN ORDERING.

SHIPPING AND HANDLING CHARGES:

OUR STANDARD SHIPPING METHODS ARE UPS GROUND, FEDEX FREIGHT, OR USF FREIGHT WITHIN THE CONTINENTAL US. SHIPPING TO ALASKA, CANADA AND FOREIGN COUNTRIES IS SUBJECT TO ADDITIONAL CHARGES. ADDITIONAL SHIPPING METHODS ARE AVAILABLE AND ARE SUBJECT TO ADDITIONAL FEES. SHIPPING CHARGES WILL BE ASSESSED WITH YOUR ORDER CONFIRMATION.

RETURNED GOODS:

CUSTOMERS MAY RETURN PRODUCT FOR IN-STORE CREDIT WHEN THE FOLLOWING PROCEDURES ARE FOLLOWED: UNDER NO CIRCUMSTANCES WILL ANY PRODUCT OVER 30 DAYS OLD FROM INVOICE DATE BE ACCEPTED OR CONSIDERED FOR RETURN. YOU MUST INCLUDE A COPY OF THE ORIGINAL INVOICES AND A NOTE CONTAINING YOUR NAME, ADDRESS, PHONE NUMBER AND A BRIEF EXPLANATION FOR YOUR RETURN. RETURNS WITHOUT THIS INFORMATION WILL BE DELAYED. ALL RETURNS ARE FOR CREDIT ONLY. NO CASH/CHECK REFUNDS GIVEN. ALL RETURNED ITEMS MUST BE IN NEW CONDITION. ANY INSTALLED OR USED ITEMS WILL NOT BE ACCEPTED. YOU MAY TRY FOR FITTING PURPOSES ONLY. ALL ORDERS ARE SUBJECT TO A 20% RESTOCKING FEE.

DAMAGED MERCHANDISE:

INDICATE "DAMAGED" WHEN YOU SIGN FOR THE MATERIALS, KEEP THE SHIPPING CARTON AND HOLD THE PRODUCTS. NOTIFY US BY PHONE FOR RETURN INSTRUCTIONS. ANY DAMAGED GOODS OR SHORTAGES MUST BE REPORTED WITHIN 10 DAYS OF THE DATE OF INVOICE.

REFUSED SHIPMENTS:

A \$25.00 CHARGE FOR PROCESSING WILL BE ASSESSED. ALL FUTURE SHIPMENTS WILL BE MADE BY CREDIT CARD OR CERTIFIED CHECK.

SHORTAGES:

RB MUST BE NOTIFIED WITHIN 3 DAYS AFTER RECEIVING SHIPMENT OF SHORTAGES TO THE ORDER. INSPECT ALL SHIPMENTS THOROUGHLY.

LIMITED WARRANTY:

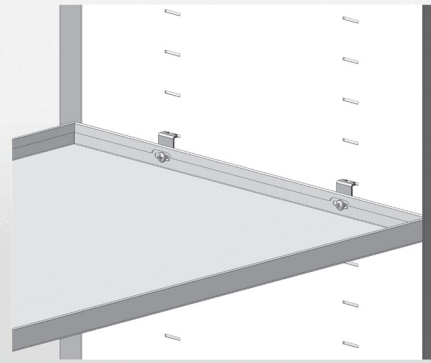
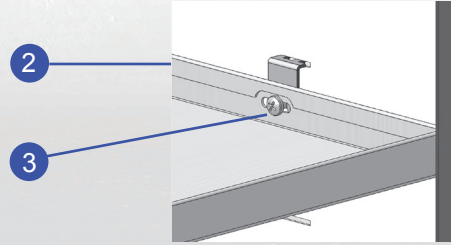
RB WARRANTS THAT ALL OF OUR PRODUCTS ARE FREE FROM DEFECTS IN MATERIAL AND WORKMANSHIP. THERE ARE NO IMPLIED WARRANTIES OF MERCHANTABILITY OR FITNESS FOR A PARTICULAR PURPOSE. THERE ARE NO WARRANTIES WHICH EXTEND BEYOND THE DESCRIPTION ABOVE.

SALES TAX:

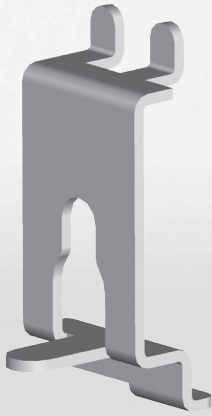
CALIFORNIA RESIDENTS WILL BE CHARGED PER THE CURRENT RATE DEMANDED BY THE STATE AND LOCAL AUTHORITIES.

SHELF FEATURES

1. MANUFACTURED WITH .080 ALUMINUM
2. HEMMED EDGE FOR INCREASED STRENGTH
3. BOLT TOGETHER DESIGN FOR POSITIVE ATTACHMENT
4. 150-200 LB WEIGHT RATING PER SHELF
5. FOUR ADJUSTABLE LOCKING BRACKETS PER SHELF



ADJUSTABLE SHELF TOP VIEW

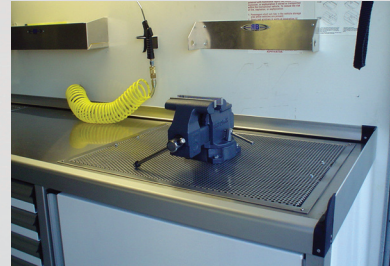


ADJUSTABLE SHELF LOCKING BRACKET

MISCELLANEOUS



96" DELUXE BASE CABINET WITH TOOLBOX INSERT AND CUSTOM WORKBENCH.



CUSTOM SINK WITH MOUNTED VISE



CUSTOM CABINET CONFIGURATION



96" OVERHEAD CABINET

CABINET ACCESSORIES



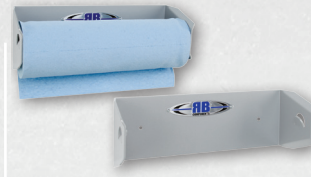
CATALOG DISPENSER



CAN & CUP HOLDER



GLOVE DISPENSER



PAPER TOWEL HOLDER



AIR TOOL HOLDER



COMBO DISPENSER



FLASHLIGHT HOLDER



BOTTLE SHELF



CAN SHELF

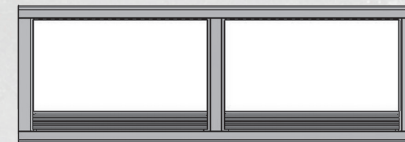


TOOL ORGANIZER

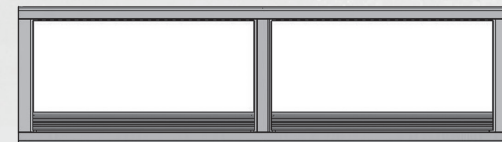
16" OVERHEAD CABINETS



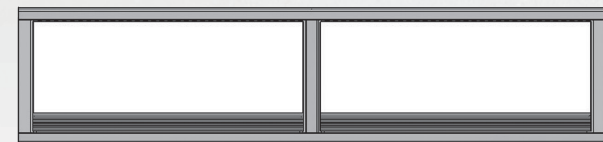
33"



48"



60"



72"



96"



>> 16" OVERHEAD CABINET

STANDARD: GAS SHOCK DOOR ASSIST
VERTICAL SWINGING DOOR WITH FULL LENGTH
PIANO HINGE SLEEK CONTOURED HANDLE DESIGN
FOR EASY OPENING AND CLOSING

OPTIONS: TOP PANEL

>> FIVE SIZES AVAILABLE:

- 33"WX16"HX14"D > ITEM NO. 5225
- 48"WX16"HX14"D > ITEM NO. 5226
- 60"WX16"HX14"D > ITEM NO. 5227
- 72"WX16"HX14"D > ITEM NO. 5228
- 96"WX16"HX14"D > ITEM NO. 5229

16" AND 24" WALL CABINETS



>> 16" WALL CABINET

STANDARD: SLEEK CONTOURED HANDLE DESIGN FOR EASY OPENING AND CLOSING HORIZONTAL SWINGING DOOR WITH FULL LENGTH PIANO HINGE

OPTIONS: TOP PANEL, LEFT/RIGHT DOOR HINGE

>> SIX SIZES AVAILABLE:

- 24"W X 16"H X 14"D > ITEM NO. | 5230
- 33"W X 16"H X 14"D > ITEM NO. | 5231
- 48"W X 16"H X 14"D > ITEM NO. | 5232
- 60"W X 16"H X 14"D > ITEM NO. | 5233
- 72"W X 16"H X 14"D > ITEM NO. | 5234
- 96"W X 16"H X 14"D > ITEM NO. | 5235

>> 24" WALL CABINET

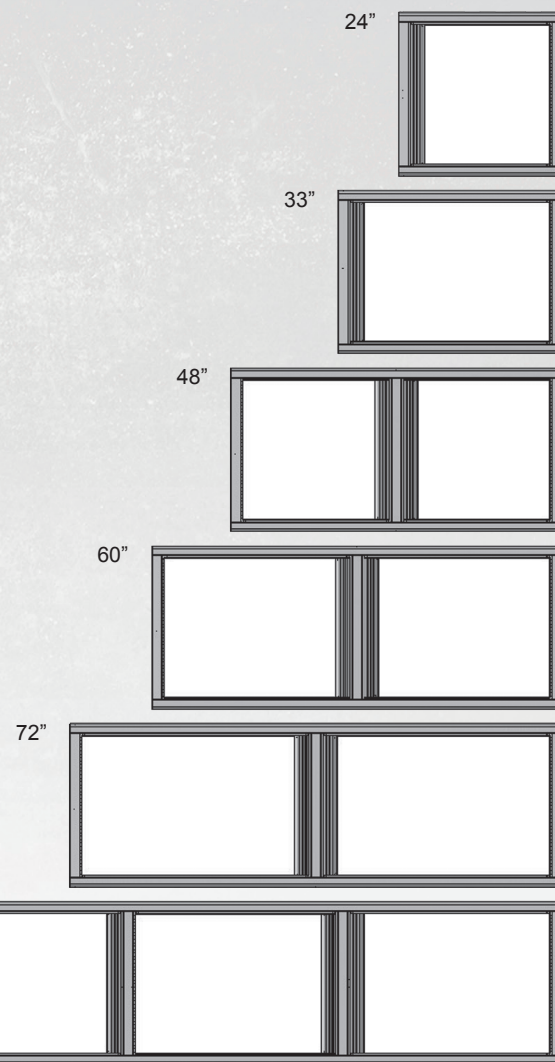
STANDARD: HORIZONTAL SWINGING DOOR WITH FULL LENGTH PIANO HINGE
SLEEK CONTOURED HANDLE DESIGN FOR EASY OPENING AND CLOSING
ONE LOCKING ADJUSTABLE SHELF PER DOOR

OPTIONS: TOP PANEL, ADDITIONAL SHELVES, LEFT/RIGHT DOOR HINGE

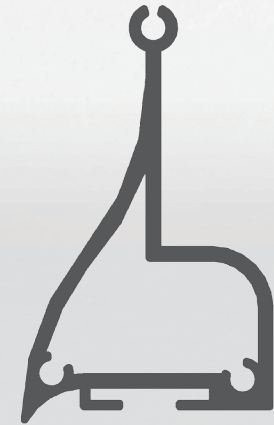
>> SIX SIZES AVAILABLE:

- 24"W X 24"H X 14"D > ITEM NO. | 5236
- 33"W X 24"H X 14"D > ITEM NO. | 5237
- 48"W X 24"H X 14"D > ITEM NO. | 5238
- 60"W X 24"H X 14"D > ITEM NO. | 5239
- 72"W X 24"H X 14"D > ITEM NO. | 5240
- 96"W X 24"H X 14"D > ITEM NO. | 5241

>> 39" WALL CABINETS NOW AVAILABLE! CALL FOR DETAILS.



EXTRUSIONS PROFILES



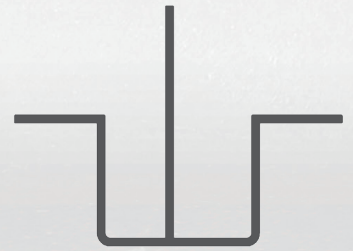
HANDLE ONE



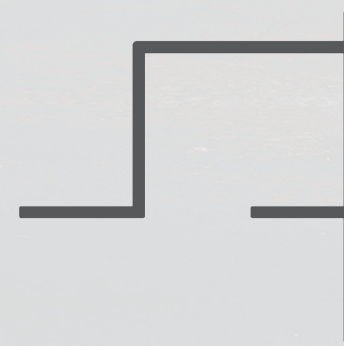
HANDLE TWO



HANDLE ASSEMBLY



CENTER SUPPORT



SIDE SUPPORT



STANDARD TOP AND BOTTOM SUPPORT



DELUXE BASE CABINET TOP SUPPORT



DELUXE BASE CABINET BACK SPLASH

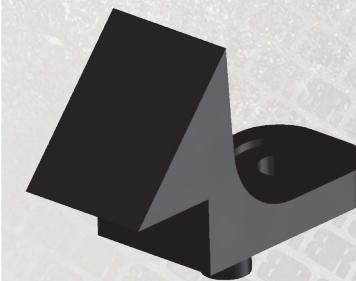
COSMETIC FEATURES



HANDLE END CAP



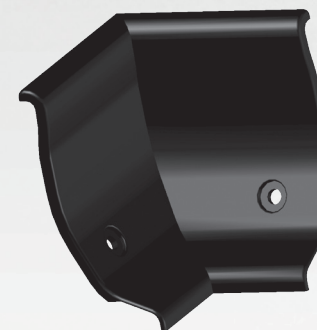
RUBBER BUMPER



LATCH



CORNER CAP



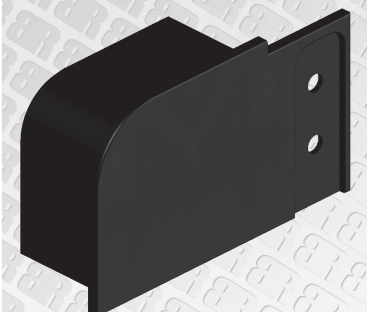
DELUXE COUNTER TOP CORNER CAP



DELUXE COUNTER TOP END CAP VIEW ONE



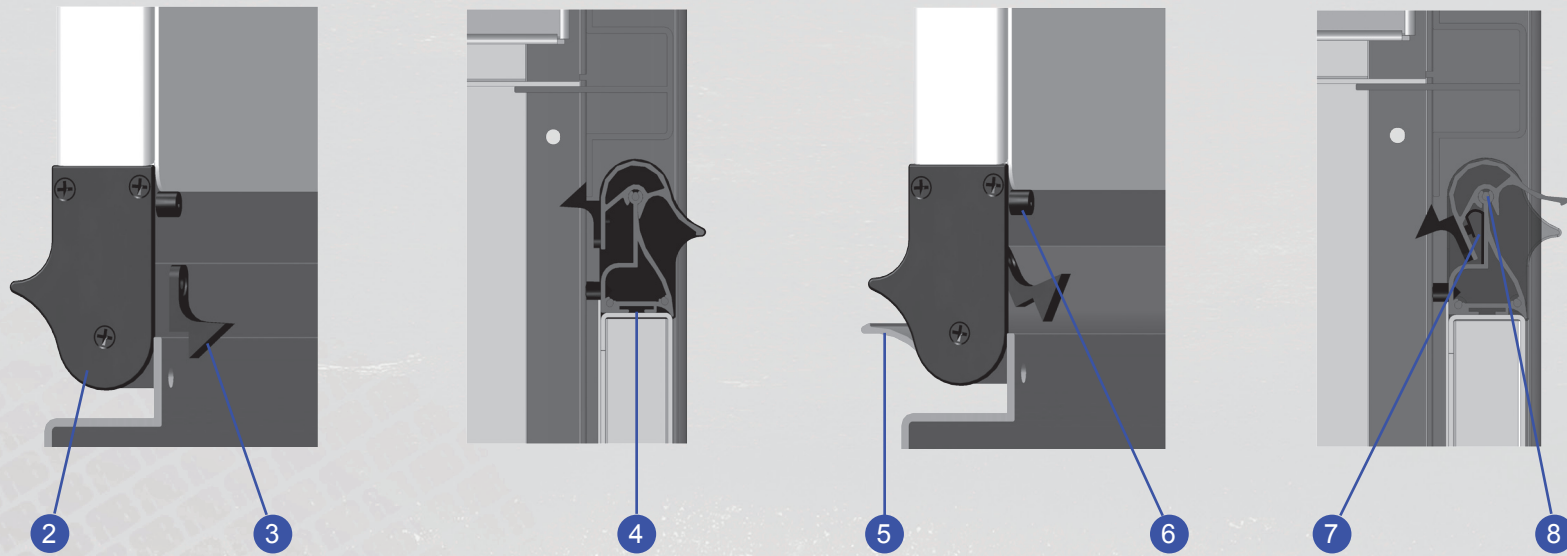
DELUXE COUNTER TOP END CAP VIEW TWO



STANDARD BASE CABINET END CAP

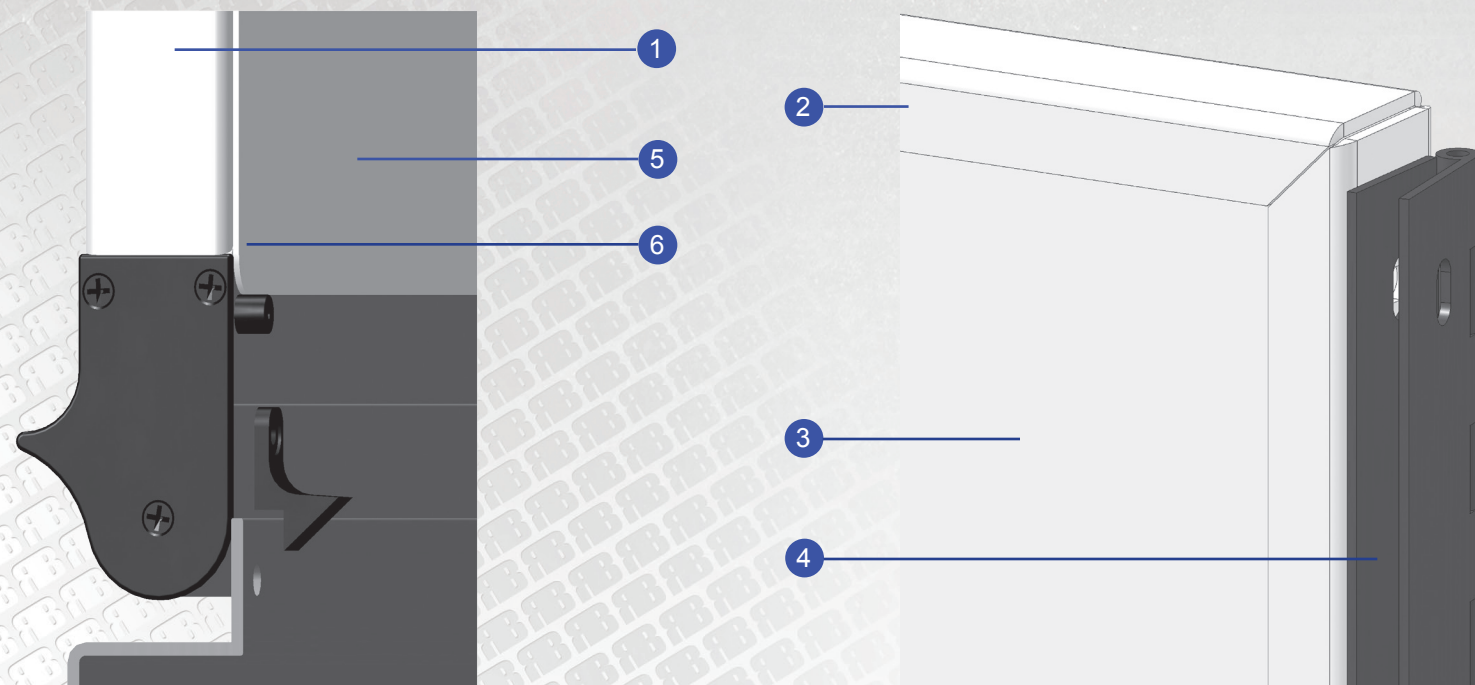
HANDLE FEATURES - PATENT PENDING DESIGN

1. SLEEK CONTOURED HANDLE DESIGN
2. HDPE PLASTIC END CAP FOR HANDLE AND SPRING CONTAINMENT
3. DUAL DELRIN LATCHES FOR POSITIVE LOCKING POWER
4. POSITIVE DOOR ATTACHMENT
5. 6063 ALLOY COMMERCIAL CLEAR ANODIZED
6. RUBBER BUMPER FOR VIBRATION DAMPENING
7. PRELOADED SPRING FOR CONSTANT PRESSURE AND POSITIVE LATCHING
8. SMOOTH ROTATION



DOOR FEATURES

1. POWDER COATED DOOR FOR DURABILITY
2. RETURN FLANGES FOR INCREASED STRENGTH
3. MANUFACTURED W/ .060 OR .080 MATERIAL
4. FULL LENGTH PIANO HINGE FOR EASY OPENING AND CLOSING
5. .040 DOOR PANEL TO PREVENT DOOR FLEXING AND PROVIDE INCREASED STRENGTH
6. WHITE BAKED ENAMEL FINISH DOOR PANEL



STORAGE/CLOSET CABINETS

>> STORAGE/CLOSET CABINETS
 STANDARD: SLEEK CONTOURED HANDLE DESIGN FOR EASY OPENING AND CLOSING TWO LOCKING ADJUSTABLE SHELVES PER DOOR FULL LENGTH PIANO HINGE ON DOOR OPEN FLOOR DESIGN TOP PANEL

OPTIONS: ADDITIONAL SHELVES, LEFT/RIGHT DOOR HINGE, UNIVERSAL HANGER

>> FOUR SIZES AVAILABLE:
 24"WX75"HX14"D > ITEM NO. | 5250
 24"WX75"HX26"D > ITEM NO. | 5242
 48"WX75"HX14"D > ITEM NO. | 5251
 48"WX75"HX26"D > ITEM NO. | 5243

>> UNIVERSAL HANGER:
 8" HANGER > ITEM NO. | 2426
 17" HANGER > ITEM NO. | 2427

>> 85" WALL STORAGE CLOSETS NOW AVAILABLE!
 CALL FOR DETAILS.



BASE CABINETS



>> 40" BASE CABINET

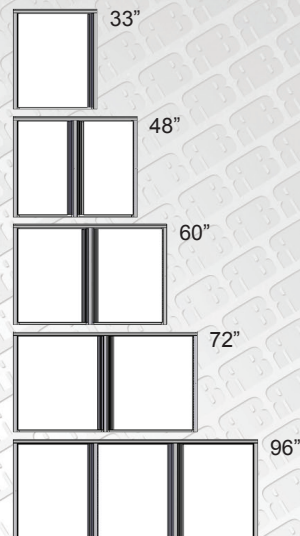
STANDARD: SLEEK CONTOURED HANDLE DESIGN FOR EASY OPENING AND CLOSING ONE LOCKING ADJUSTABLE SHELF PER DOOR FULL LENGTH PIANO HINGE OPEN FLOOR DESIGN .064 TOP PANEL

OPTIONS: ADDITIONAL SHELVES, LEFT/RIGHT DOOR HINGE, TOOLBOX INSERT FOR 33", 72", AND 96" BASE CABINETS.

>> TEN SIZES AVAILABLE:

- 33"WX40"HX26"D > ITEM NO. | 5205
- 48"WX40"HX26"D > ITEM NO. | 5206
- 60"WX40"HX26"D > ITEM NO. | 5207
- 72"WX40"HX26"D > ITEM NO. | 5208
- 96"WX40"HX26"D > ITEM NO. | 5209
- 33"WX40"HX14"D > ITEM NO. | 5215
- 48"WX40"HX14"D > ITEM NO. | 5216
- 60"WX40"HX14"D > ITEM NO. | 5217
- 72"WX40"HX14"D > ITEM NO. | 5218
- 96"WX40"HX14"D > ITEM NO. | 5219

DELUXE BASE CABINETS



>> 40" DELUXE BASE CABINET:

STANDARD: STAINLESS STEEL COUNTERTOP WITH A 2/4" LAMINATE BACKING AND A 3 WALL SPLASH SLEEK CONTOURED HANDLE DESIGN FOR EASY OPENING AND CLOSING ONE LOCKING ADJUSTABLE SHELF PER DOOR FULL LENGTH PIANO HINGE ON DOOR OPEN FLOOR DESIGN

OPTIONS: ADDITIONAL SHELVES; LEFT/RIGHT DOOR HINGE; TOOLBOX INSERT FOR 33", 72", AND 96" BASE CABINETS

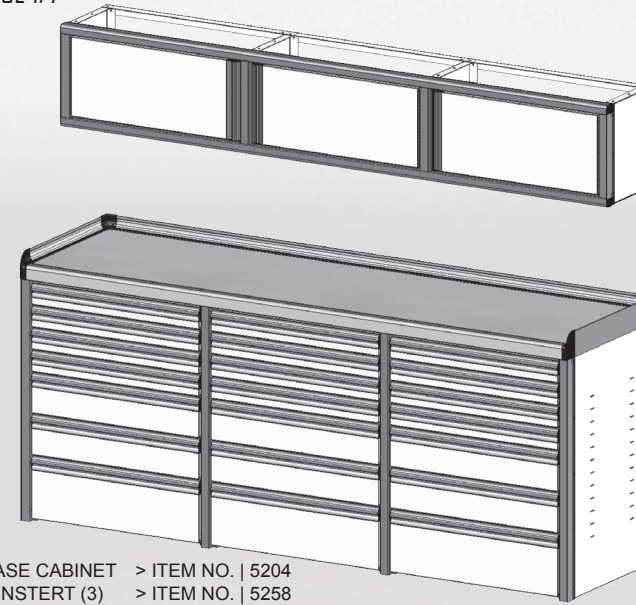
>> FIFTEEN SIZES AVAILABLE:

- 33"WX40"HX14"D > ITEM NO. | 5210
- 33"WX40"HX26"D > ITEM NO. | 5200
- 33"WX40"HX20"D > ITEM NO. | 5270
- 48"WX40"HX14"D > ITEM NO. | 5211
- 48"WX40"HX26"D > ITEM NO. | 5201
- 48"WX40"HX20"D > ITEM NO. | 5271
- 60"WX40"HX14"D > ITEM NO. | 5212
- 60"WX40"HX26"D > ITEM NO. | 5202
- 60"WX40"HX20"D > ITEM NO. | 5272
- 72"WX40"HX14"D > ITEM NO. | 5213
- 72"WX40"HX26"D > ITEM NO. | 5203
- 72"WX40"HX20"D > ITEM NO. | 5273
- 96"WX40"HX14"D > ITEM NO. | 5214
- 96"WX40"HX26"D > ITEM NO. | 5204
- 96"WX40"HX20"D > ITEM NO. | 5274

>> 36" DELUXE BASE CABINETS NOW AVAILABLE! CALL FOR DETAILS.

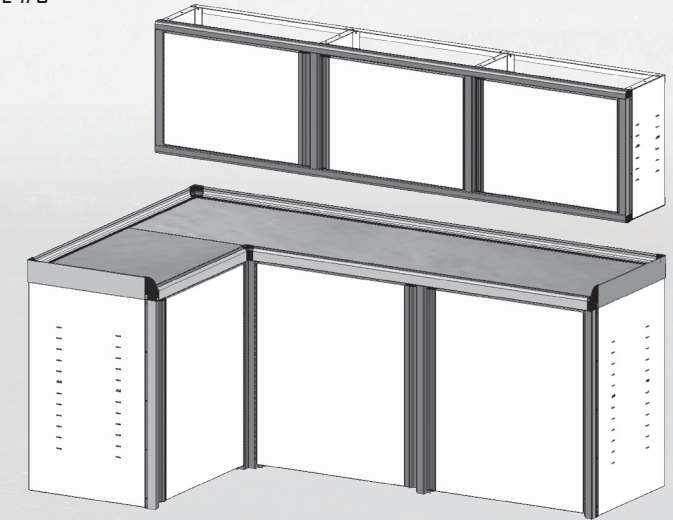
SAMPLE CONFIGURATIONS

>> PACKAGE #7



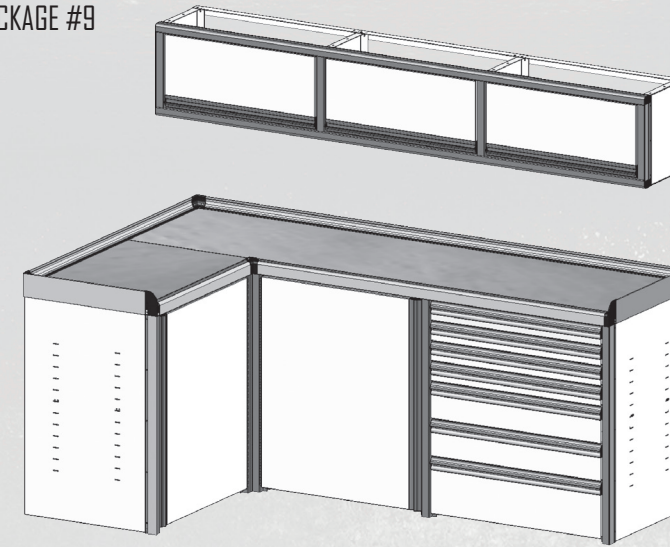
DELUXE BASE CABINET > ITEM NO. | 5204
TOOLBOX INSTERT (3) > ITEM NO. | 5258
WALL CABINET > ITEM NO. | 5235

>> PACKAGE #8



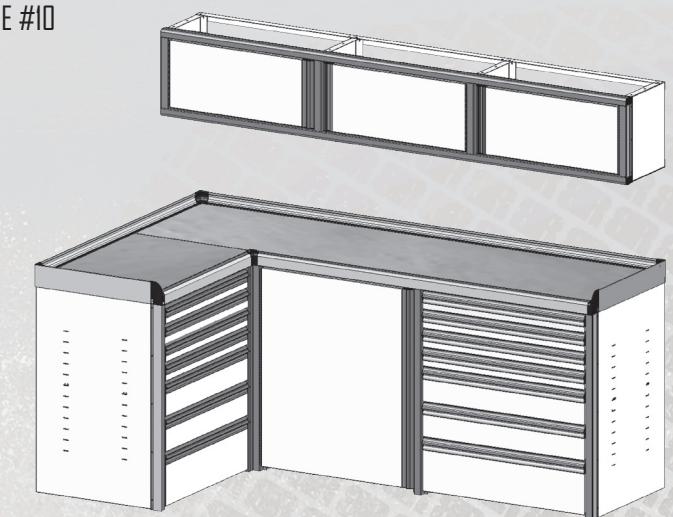
CORNER BASE CABINET > ITEM NO. | 5268
WALL CABINET > ITEM NO. | 5241

>> PACKAGE #9



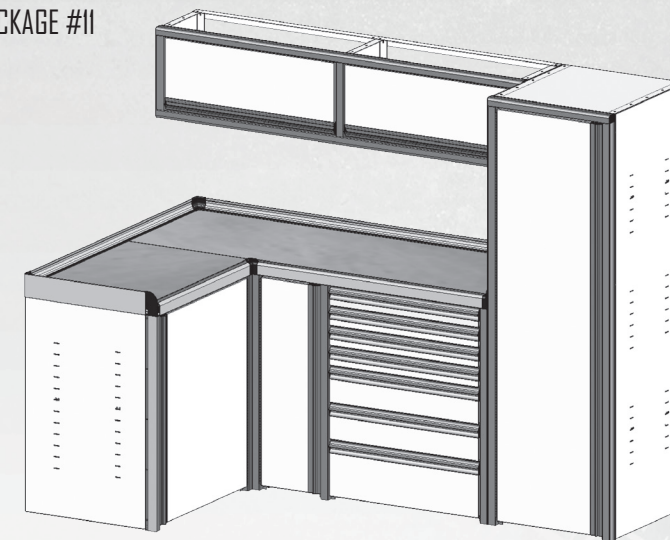
CORNER BASE CABINET W/ TOOLBOX INSERT > ITEM NO. | 5269
OVERHEAD CABINET > ITEM NO. | 5229

>> PACKAGE #10



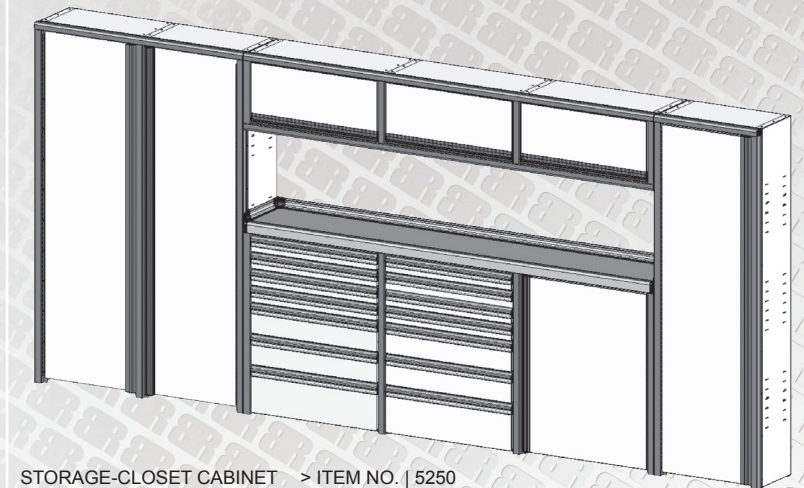
CORNER BASE CABINET W/ TOOLBOX INSERT > ITEM NO. | 5269
TOOL BOX INSERT > ITEM NO. | 5259
WALL CABINET > ITEM NO. | 5235

>> PACKAGE #11



STORAGE-CLOSET CABINET > ITEM NO. | 5242
CORNER BASE CABINET W/ TOOLBOX INSERT > ITEM NO. | 5267
OVERHEAD CABINET > ITEM NO. | 5228

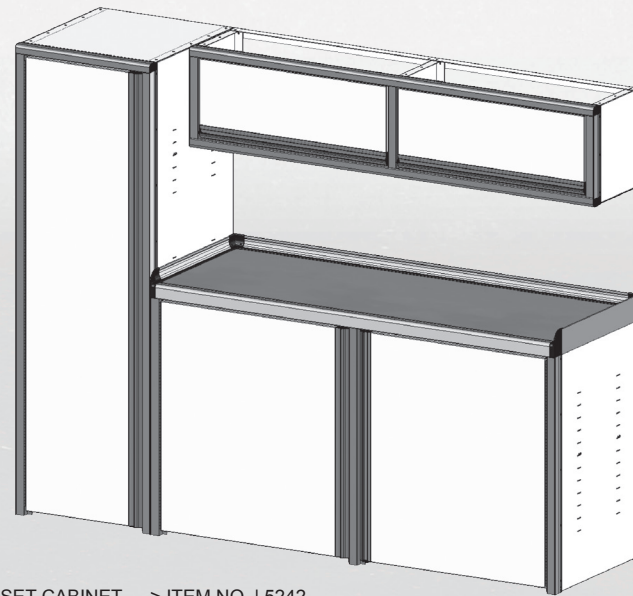
>> PACKAGE #12



STORAGE-CLOSET CABINET > ITEM NO. | 5250
STORAGE-CLOSET CABINET > ITEM NO. | 5251
DELUXE BASE CABINET > ITEM NO. | 5214
TOOLBOX INSERT (2) > ITEM NO. | 5262
OVERHEAD CABINET > ITEM NO. | 5229

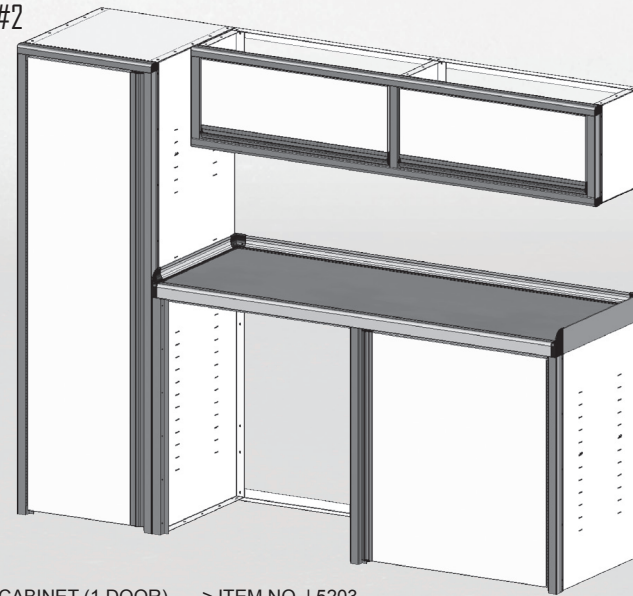
SAMPLE CONFIGURATIONS

>> PACKAGE #1



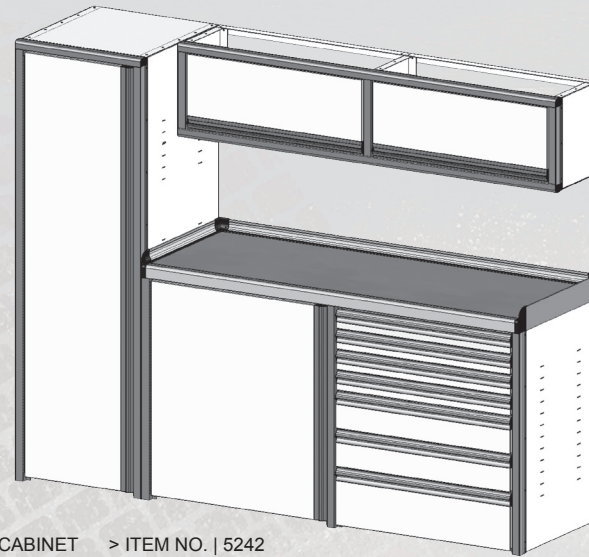
STORAGE-CLOSET CABINET > ITEM NO. | 5242
 DELUXE BASE CABINET > ITEM NO. | 5203
 WALL CABINET > ITEM NO. | 5234

>> PACKAGE #2



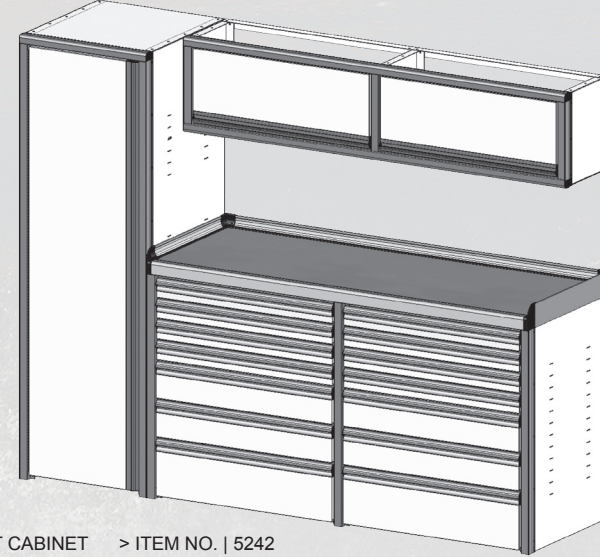
DELUXE BASE CABINET (1 DOOR) > ITEM NO. | 5203
 STORAGE-CLOSET CABINET > ITEM NO. | 5242
 OVERHEAD CABINET > ITEM NO. | 5228

>> PACKAGE #3



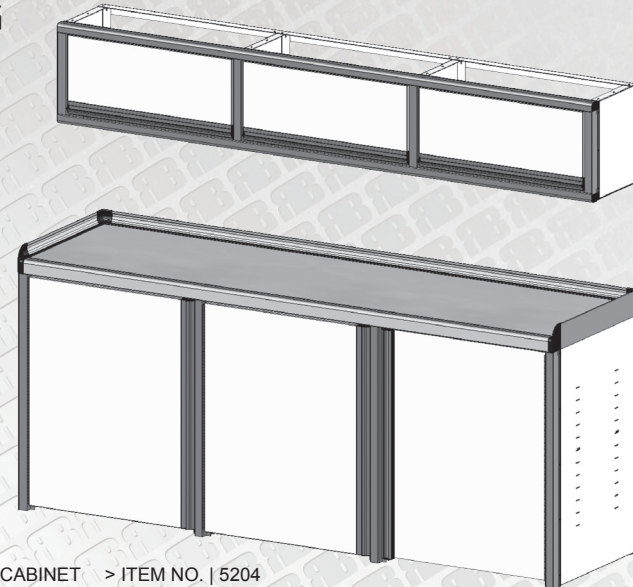
STORAGE-CLOSET CABINET > ITEM NO. | 5242
 DELUXE BASE CABINET > ITEM NO. | 5203
 OVERHEAD CABINET > ITEM NO. | 5228
 TOOL BOX INSERT > ITEM NO. | 5260

>> PACKAGE #4



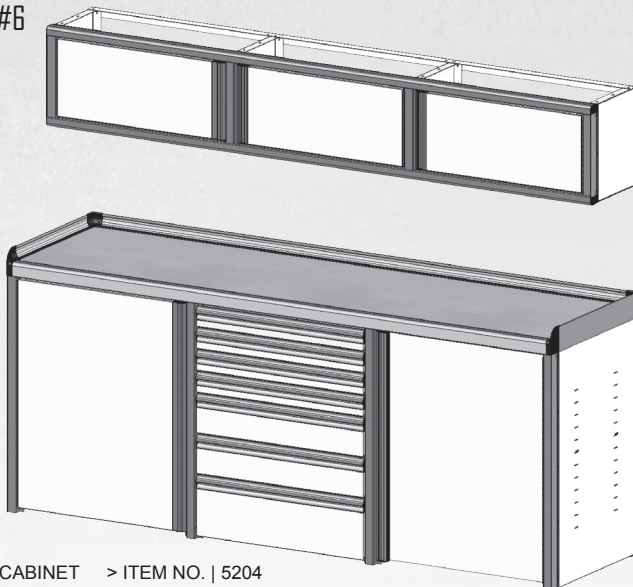
STORAGE-CLOSET CABINET > ITEM NO. | 5242
 DELUXE BASE CABINET > ITEM NO. | 5203
 OVERHEAD CABINET > ITEM NO. | 5228
 TOOL BOX INSERT (2) > ITEM NO. | 5260

>> PACKAGE #5



DELUXE BASE CABINET > ITEM NO. | 5204
 OVERHEAD CABINET > ITEM NO. | 5229

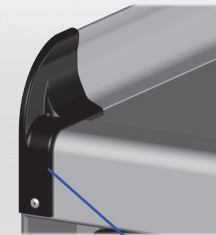
>> PACKAGE #6



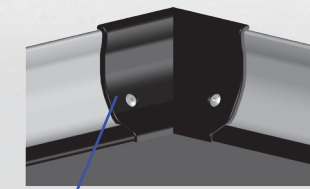
DELUXE BASE CABINET > ITEM NO. | 5204
 TOOL BOX INSERT > ITEM NO. | 5258
 WALL CABINET > ITEM NO. | 5235

BASE CABINET FEATURES

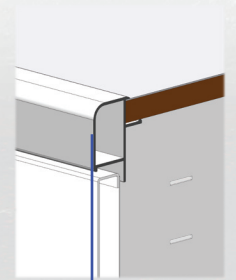
HIGH DENSITY PLASTIC END CAP



HIGH DENSITY PLASTIC CORNER CAP

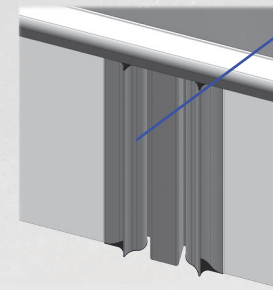


COUNTERTOP ASSEMBLY

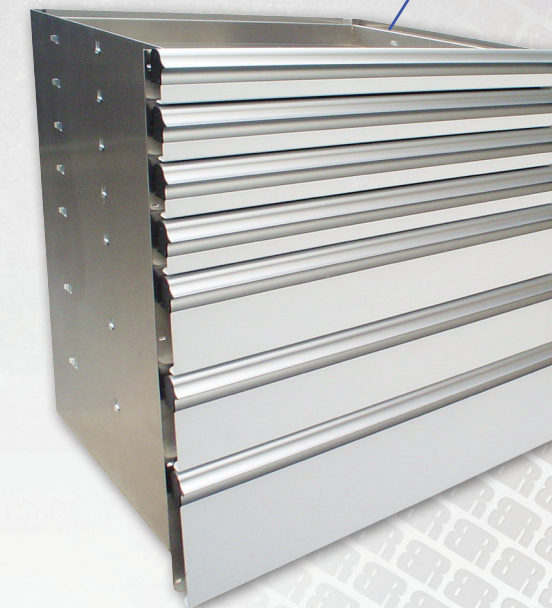


FULL LENGTH PIANO HINGE

SLEEK CONTOURED FULL LENGTH HANDLE



OPTIONAL TOOLBOX ASSEMBLY. SEE PG. 8

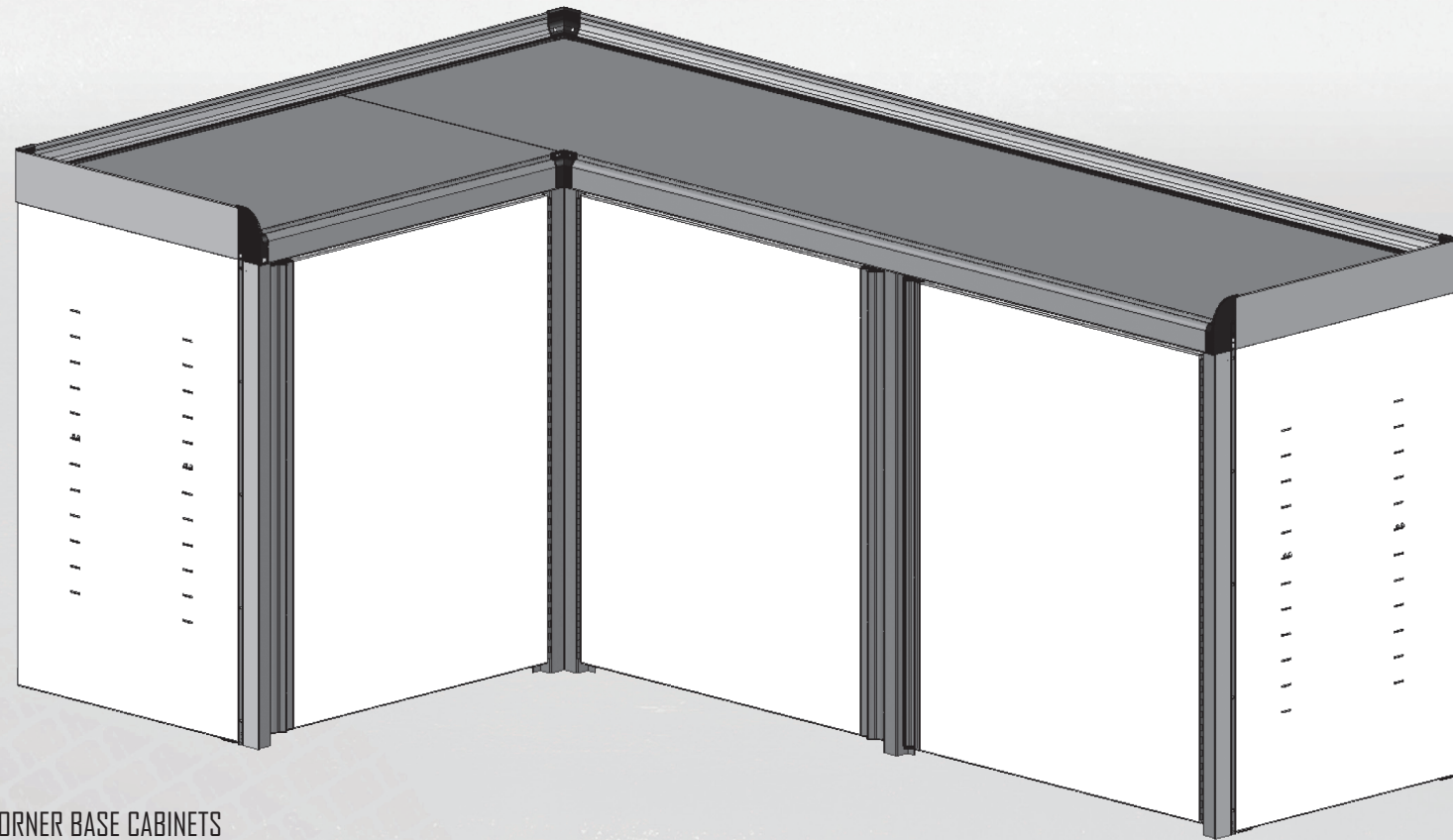


BACK SPLASH PROFILE: COUNTERTOP CONSTRUCTION



3/4" LAMINATE WITH .050 STAINLESS COUNTERTOP

CORNER BASE CABINETS



>> CORNER BASE CABINETS

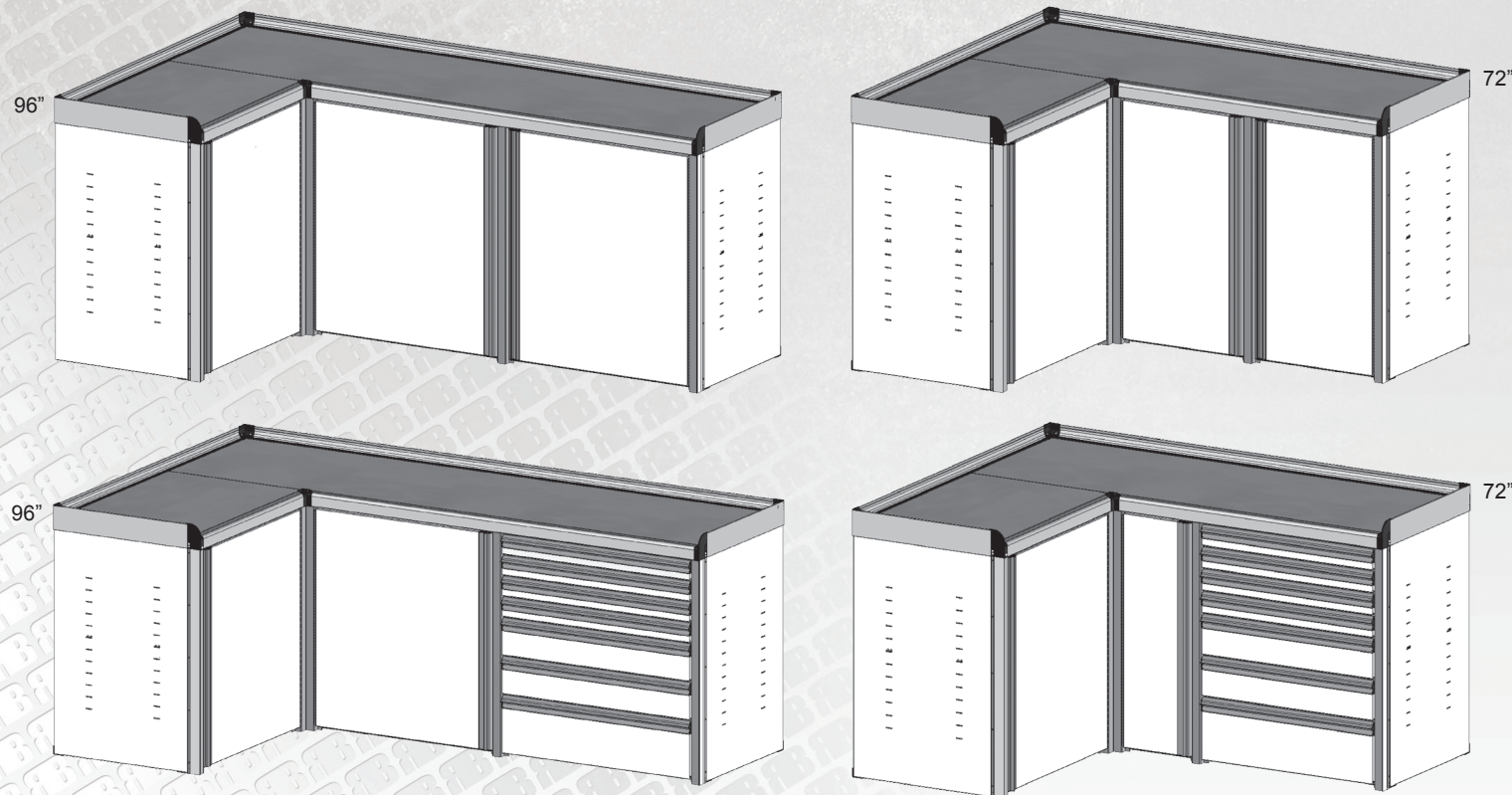
STANDARD: DELUXE COUNTERTOP CONSISTING OF A 5 WALL SPLASH AND STAINLESS STEEL COUNTERTOP SLEEK CONTOURED HANDLE DESIGN FOR EASY OPENING AND CLOSING UTILIZE THE CORNER OF YOUR TRAILER TO MAXIMIZE SPACE USAGE ONE LOCKING ADJUSTABLE SHELF PER DOOR FULL LENGTH PIANO HINGE ON DOOR OPEN FLOOR DESIGN *SEE DELUXE BASE CABINETS FOR FEATURES

OPTIONS: ONE OR TWO TOOLBOX INSERT COMPATIBILITY, LEFT/RIGHT HINGE DOORS, ADDITIONAL SHELVES

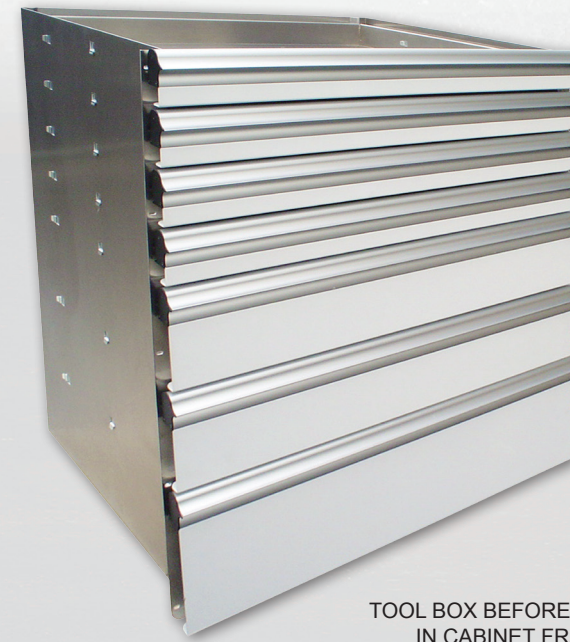
>> FOUR SIZES AVAILABLE:

- | | |
|--------------------------------------|-------------------|
| 72"W X 40"H X 26"D | > ITEM NO. 5266 |
| 96"W X 40"H X 26"D | > ITEM NO. 5268 |
| 72"W X 40"H X 26"D W/ TOOLBOX INSERT | > ITEM NO. 5267 |
| 96"W X 40"H X 26"D W/ TOOLBOX INSERT | > ITEM NO. 5269 |

*ADDITIONAL SETUPS AVAILABLE. CONTACT YOUR RB ASSOCIATE FOR DETAILS.



TOOL BOX INSERTS



TOOL BOX BEFORE PLACED IN CABINET FRAME



72" DELUXE BASE CABINET WITH 4: 3.5", 2: 6.5", AND 1: 10" DRAWERS

>> TOOL BOX INSERT

STANDARD: SLEEK CONTOURED HANDLE DESIGN FOR EASY OPENING AND CLOSING OF DRAWERS 250LB WEIGHT LIMIT PER DRAWER FULL EXTENSION DRAWER SLIDES SELF-LUBRICATED BALL BEARING DRAWER SLIDES

OPTIONS: DIVIDERS, PLASTIC BINS

>> EIGHT SIZES AVAILABLE:

- | | |
|---|-------------------|
| -INSERTS FOR 33" AND 96" BASE CABINETS: | |
| 33",96"X26" - 4:3.5", 2:6.5", 1:10" DRAWERS | > ITEM NO. 5258 |
| 33",96"X26" - 2:3.5", 1:10" DRAWERS | > ITEM NO. 5259 |
| 33",96"X14" - 4:3.5", 2:6.5", 1:10" DRAWERS | > ITEM NO. 5262 |
| 33",96"X14" - 2:3.5", 1:10" DRAWERS | > ITEM NO. 5263 |
| -INSERTS FOR 72" BASE CABINETS: | |
| 72"X26" - 4:3.5", 2:6.5", 1:10" DRAWERS | > ITEM NO. 5260 |
| 72"X26" - 2:3.5", 1:10" DRAWERS | > ITEM NO. 5261 |
| 72"X14" - 4:3.5", 2:6.5", 1:10" DRAWERS | > ITEM NO. 5264 |
| 72"X14" - 2:3.5", 1:10" DRAWERS | > ITEM NO. 5265 |

DRAWER OPTIONS

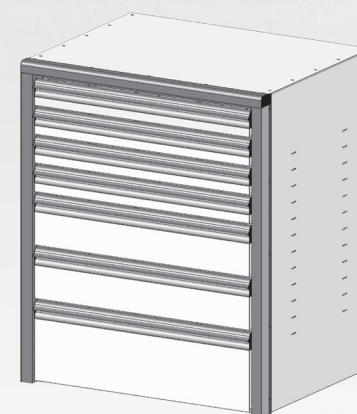
DIVIDERS



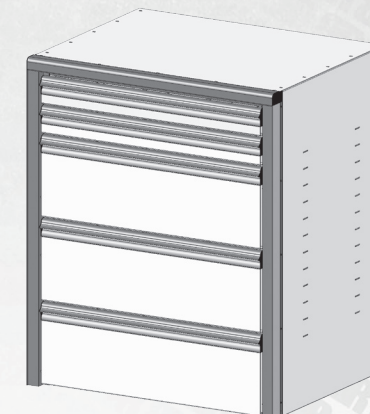
- >> 26" BASIC DIVIDERS
- | | |
|------|------------------|
| 2" | > ITEM NO. 932 |
| 5" | > ITEM NO. 931 |
| 8.5" | > ITEM NO. 930 |

- >> 14" BASIC DIVIDERS
- | | |
|------|------------------|
| 2" | > ITEM NO. 935 |
| 5" | > ITEM NO. 934 |
| 8.5" | > ITEM NO. 933 |

DRAWER CONFIGURATIONS

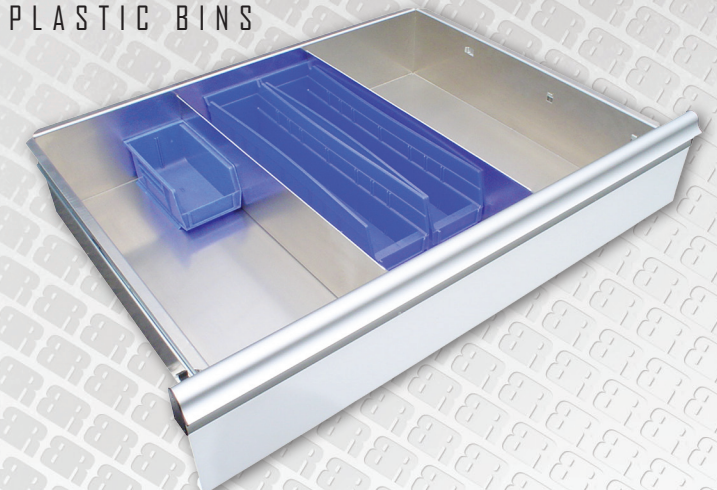


4 - 3.5" DRAWERS
2 - 6.5" DRAWERS
1 - 10" DRAWERS



3 - 3.5" DRAWERS
1 - 10" DRAWERS

PLASTIC BINS



*PLEASE CONTACT YOUR SPEC ALLOY ASSOCIATE FOR DETAILS